

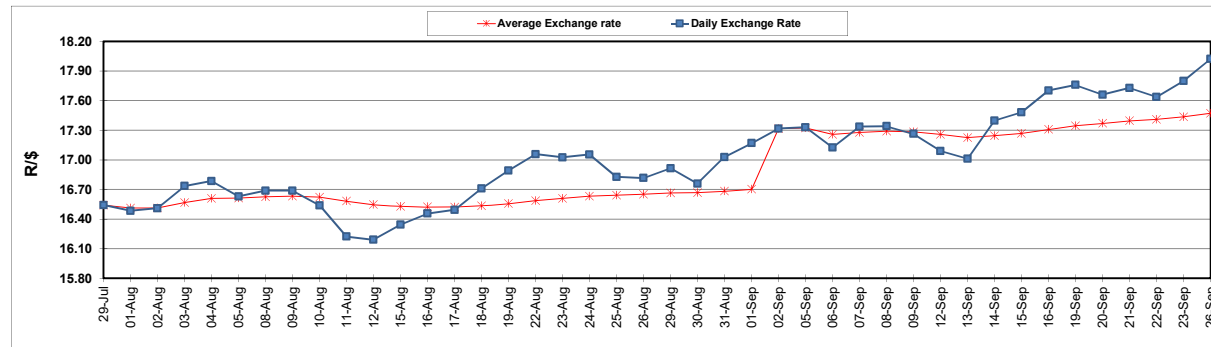
	PETROL 95 ULP	PETROL 93 ULP & LRP	DIESEL 0.05%	DIESEL 0.005%	ILL. PAR.
GAUTENG PUMP PRICE (SA c/l) AS FROM 07/09/2022	2,338.000	2,295.000	-	-	-
WHOLESALE PRICE (SA c/l) AS FROM 07/09/2022	-	-	2,396.100	2,415.500	1,760.288
SINGLE NATIONAL MAXIMUM RETAIL PRICE	-	-	-	-	2,322.000
BASIC FUEL PRICE - 26/09/2022 (SA c/l)	1,135.752	1,109.928	1,450.677	1,474.026	1,397.701
PRESS RELEASE CONTRIBUTION TO BFP 07/09/2022 - 26/09/2022 (SA c/l)	1,247.750	1,204.750	1,513.630	1,533.030	1,542.128
UNIT OVER/(UNDER) RECOVERY - 26/09/2022 (SA c/l)	111.998	94.822	62.953	59.004	144.427
AVERAGE BASIC FUEL PRICE 02/09/2022 - 26/09/2022	1,178.409	1,147.460	1,540.647	1,563.663	1,501.467
AVERAGE UNIT OVER/(UNDER) RECOVERY 02/09/2022 - 26/09/2022	110.751	98.701	(11.664)	(17.044)	55.131

### ANALYSIS MOVEMENT OF AVERAGE OVER/(UNDER) RECOVERY

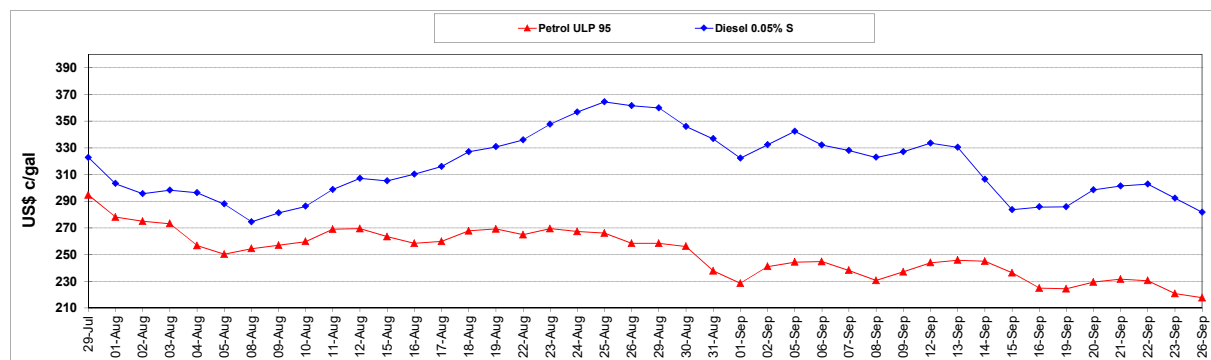
	PETROL 95	PETROL 93	DIESEL 0.05%	DIESEL 0.005%	ILL. PAR.
- MOVEMENT IN INTERNATIONAL PRODUCT PRICES	162.570	149.158	56.083	51.714	121.156
- MOVEMENT IN EXCHANGE RATE	(51.818)	(50.457)	(67.747)	(68.759)	(66.024)
AVERAGE UNIT OVER/(UNDER) RECOVERY 02/09/2022 - 26/09/2022	110.751	98.701	(11.664)	(17.044)	55.131

### R/\$ EXCHANGE RATE - (R/\$18.0210 - 26/09/2022)

#### EXCHANGE RATE USED IN BASIC FUEL PRICE



#### INTERNATIONAL PRODUCT PRICES OF BASKET USED IN BASIC FUEL PRICE



#### BASIC FUEL PRICE IN SA CENTS PER LITRE

